



Clinical accessories portfolio

## **MATERNAL FETAL MONITORING**

# COROMETRICS



Each monitor within the GE Healthcare Corometrics™ portfolio is specifically designed, tested and validated to perform best when used with certified GE Healthcare clinical accessories. We warranty that these products will provide the very highest level of quality, performance, and safety when used together as a system.



# NON-INVASIVE BLOOD PRESSURE

GE Healthcare provides a comprehensive portfolio of non-invasive blood pressure (NIBP) hoses for use with GE Healthcare monitors connecting to CRITIKON™ blood pressure (BP) cuffs. The air hoses are offered in a variety of lengths and connectors for adult use. The hoses are not made with natural rubber latex.

For a complete list of cuffs compatible with your equipment, contact your GE Healthcare sales representative.



## NIBP HOSES

CONNECTOR TYPE	PATIENT	LENGTH	PART NUMBER	QUANTITY
DINACLICK™ Connector	Adult - Pediatric	1.2 m/4 ft	2058203-001	1
		3.6 m/12 ft	2058203-002	
		7.2 m/24 ft	2058203-003	

Product Compatibility: Corometrics 120, 128, 129, 259 and 259cx.

For all available hoses in your region please ask your product sales specialist or refer to the global catalog



2058203-001, 2058203-002 & 2058203-003

Not available in all countries





## CUFFS

## SOFT-CUF

Our most popular cuff, the CRITIKON SOFT-CUF™ is designed with soft, absorbent material with rounded corners for maximizing patient comfort during extended stays at the hospital. These cuffs are ideal for patients with longer term stays or for protocols where the cuff travels with the patient through their total length of time in the hospital. It is economically priced to help support your infection control efforts.



20 cuffs/box

SIZE	COLOR	LIMB CIRCUMFERENCE	2-TUBE DINAClick* ISO 80369-5 COMPLIANT
Small adult	Royal Blue	17-25 cm	SFT-A1-2A-5S*
Small adult Long	Royal Blue	17-25 cm	SFT-A1-2A-L-5S
Adult*	Navy	23-33 cm	SFT-A2-2A-5S*
Adult Long*	Navy	23-33 cm	SFT-A2-2A-L-5S*
Large Adult*	Wine	31-40 cm	SFT-A3-2A-5S*
Large Adult Long	Wine	31-40 cm	SFT-A3-2A-L-5S

\*Has a respective part number with an "-INT" suffix, denoting that the Instructions For Use (IFU) is available in multiple languages

## ASSORTMENT PACKS

PRODUCT	2-TUBE DINAClick* ISO 80369-5 COMPLIANT
5 Small Adult, 10 Adult, 5 Large Adult; 20 cuffs	2059303-501
3 Small Adult, 7 Adult, 3 Adult Long, 3 Large Adult, 4 RADIAL-CUF (forearm); 20 cuffs	2059303-503
1 Small Adult, 1 Adult, 1 Large Adult, 1 RADIAL-CUF; 4 cuffs	2059303-506

\*For other types of available connectors in your region please ask your product sales specialist or see the global catalog

## RADIAL-CUF

SIZE	COLOR	LIMB CIRCUMFERENCE	2-TUBE DINAClick* ISO 80369-5 COMPLIANT
Obese Adult	Purple	26 - 36 cm (Forearm)	SFT-F1-2A-5S

Not available in all countries



## CUFFS

# DURA-CUF

CRITIKON DURA-CUF™ is gentle and designed for durability. Made with tough, flexible nylon, they are convenient and easy-to-clean with curved corners to enhance your patient's comfort. They are constructed for multiple patient use in low-acuity care settings.



Easy-to-use, fast **DINACLICK connector** enables nurses to link the cuff to the NIBP hose quicker than a pair of traditional tube connectors. The audible click lets users know there is a proper connection.



5 cuffs/box

SIZE	COLOR	LIMB CIRCUMFERENCE	2-TUBE DINACLICK* ISO 80369-5 COMPLIANT
Small Adult	Royal Blue	17-25 cm	DUR-A1-2A-5S
Small Adult Long	Royal Blue	17-25 cm	DUR-A1-2A-L-5S
Adult	Navy	23-33 cm	DUR-A2-2A-5S
Adult long	Navy	23-33 cm	DUR-A2-2A-L-5S
Large Adult	Wine	31-40 cm	DUR-A3-2A-5S-5S
Large Adult Long	Wine	31-40 cm	DUR-A3-2A-L



## ASSORTMENT PACKS

PRODUCT	2-TUBE DINACLICK* ISO 80369-5 COMPLIANT
1 Small Adult, 1 Adult, 1 Large Adult; 3 cuffs	2059301-501
1 Small Adult, 3 Adult, 1 Adult Long, 1 Large Adult; 6 cuffs	2059301-503



\*For other types of available connectors in your region please ask your product sales specialist or see the global catalog

Not available in all countries



# MATERNAL SUPPLIES

GE Healthcare has a wide variety of monitoring solutions, with a full complement of products, for all mothers-to-be.



## MASIMO

PRODUCT	PART NUMBER	LENGTH	QUANTITY
Masimo Sensor LNCS dc-1, Finger, Adult, Reusable	2027258-001	1 m/3 ft	1
Masimo LNC-10 Interconnect Cable	2027263-001	1 m/3 ft	1
RD cable	RD-4085	3.6 m/12 ft	1
RD sensor	RD-4050	1 m/3 ft	1



## NELLCOR

PRODUCT	PART NUMBER	LENGTH	QUANTITY
Nellcor OxiMax Connector and GE Interconnect Cable	2025350-001	2.9 m/9.5 ft	1
Nellcor DuraSensor, Finger, Reusable, Adult	70124021	1 m/3 ft	1

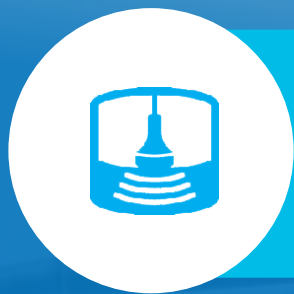


## MECG ACCESSORIES

PRODUCT	PART NUMBER	QUANTITY
Adults ECG electrodes wet gel	2014768-001	300
Multi-Link 3-Lead Maternal ECG Cable, Round Connector, 12' IEC	1554BAO	1
FECG/MECG Y Adapter Cable	1442AAO	1

*\*Sold with equipment only in some countries. Please consult with your local GE Healthcare representative if purchasing replacement accessories.*

*Not available in all countries*



# TRANSDUCERS AND BELTS

*Corometrics Nautilus Nine-Crystal transducers are available directly from GE Healthcare for replacement through the life of your Corometrics monitor. The combo transducers, for both ultrasound and toco, feature the same trusted technology-but now with a novel combination of a button and loop styles in a single transducer.*

*Color is subject to change*



2015827-001



2108346-001



2108347-001

## TRANSDUCERS AND BELT ACCESSORIES

PRODUCT	PART NUMBER	QUANTITY
Transducer Belt, Button, Single Patient Use	2015827-001	10
Transducer Belt, Button, Single Patient Use	2015919-001	200
Corometrics Ultrasound Transducer, Button and Loop	2108346-001	1
Corometrics TOCO Transducer, Button and Loop	2108347-001	1
Transducer Belts (loop style belt)	4425CAO	1
TOCO Transducer Watertight Button	2264HAX	1
TOCO Transducer Watertight Loop	2264LAX	1
US Transducer Nautilus Watertight Button	5700HAX	1
US Transducer Nautilus Watertight Loop-Style	5700LAX	1

## FETAL SCALP ELECTRODE\*

PRODUCT	PART NUMBER	QUANTITY
Qwik Connect Plus FSE Leg Plate Cable, 8', Round Connector	1590AAO	1
Qwik Connect Plus FSE Leg Plate Cable, 8', Rectangular Connector	1591AAO	1
Qwik Connect Plus Fetal Spiral Electrodes	7000AAO	1
Qwik Connect Plus Spiral Leg Plate Disposable Attachment Pads	2464AAO	1

*\*Sold with equipment only. Please consult with your local GE Healthcare representative if purchasing replacement accessories.*

*Not available in all countries*





# NOVII

Novii™ Patch is a single-patient-use, peel-and-stick disposable accessory which attaches to the woman's abdomen using comfortable adhesives. The patch incorporates ECG electrodes which pick up ECG and EMG signals from the skin surface. The Novii patch is compatible with the Novii Wireless Patch System.



107-PT-004



105-PT-102



105-PT-104



105-PT-106

## NOVII ACCESSORIES

PRODUCT	PART NUMBER	QUANTITY
Novii Patch	107-PT-004-10	10
	107-PT-004-50	50
FECG/MEKG 'Y' adapter for 259cx rectangular green connector	1442AAO	1
Novii Interface Cable - GE FECG	105-PT-102	1
Novii Interface Cable - GE MEKG	105-PT-104	1
Novii Interface Cable - GE UA	105-PT-106	1
Novii Pod	5513699	1
Novii Power Supply	5811343	1
3M Red Dot 2236 Skin Prep Tape	100-PT-007	1

Items are sold through the Maternal Infant Care equipment sales team, please reach out to them for availability.

Not available in all countries





# ADDITIONAL ACCESSORIES



## FETAL MONITOR PAPER

PRODUCT	PART NUMBER	QUANTITY
Thermal GE Paper, 30-240 bpm scaling	2104907-001	40 packs/case
Thermal GE Paper, 50-210 bpm scaling	2104908-001	40 packs/case

Product Compatibility: Corometrics 170 and 250cx series



## REMOTE EVENT MARKER

PRODUCT	PART NUMBER	QUANTITY
Remote Event Marker	2107349-001	1

Items are sold through the Maternal Infant Care equipment sales team, please reach out to them for availability.

Not available in all countries



## About GE Healthcare

GE Healthcare is a leading global medical technology and digital solutions innovator, GE Healthcare enables clinicians to make faster, more informed decisions through intelligent devices, data analytics, applications and services, supported by its Edison intelligence platform. With over 100 years of healthcare industry experience and around 50,000 employees globally, the company operates at the center of an ecosystem working toward precision health, digitizing healthcare, helping drive productivity and improve outcomes for patients, providers, health systems and researchers around the world. Follow us on Facebook, LinkedIn, Twitter and Insights , or visit our website [www.gehealthcare.com](http://www.gehealthcare.com) for more information.

The list of accessories displayed in this catalogue is not exhaustive, Contact your GE Healthcare representative to obtain the list of all accessories compatible with your equipment.

[www.gehealthcare.co.uk](http://www.gehealthcare.co.uk)

Product may not be available in all countries and regions. Contact a GE Healthcare Representative for more information.

Data subject to change.

GE, the GE Monogram, CRITIKON, DURA-CUF, SOFT-CUF, SENSE-CUF, DINACLICK, Novii and Corometrics are trademarks of General Electric Company.

\*All other third-party trademarks are the property of their respective owners.

Reproduction in any form is forbidden without prior written permission from GE.

Nothing in this material should be used to diagnose or treat any disease or condition. Readers must consult a healthcare professional.

© 2021 General Electric Company. All rights reserved.

JB03879XE 5/21