

ReadyFix™

Fleet management solution

Remotely maintain and optimize your critical care devices
and help minimize disruptions to patient care



GE HealthCare

ReadyFix is an easy and efficient device management solution that simplifies the operation and maintenance of your GE HealthCare MAC VU360™ devices

Enables remote device management

Gain flexibility and efficiency by optimizing devices remotely.

- Ensure proactive maintenance and optimization of MAC VU360 devices using real-time data for remote diagnosis and repair, minimizing disruptions to users' workflows
- Manage, verify and push firmware and software updates by care area, either immediately or on a schedule, to enhance efficiency and flexibility
- Centrally manage configurations by care area or for the entire fleet or a single device, with the option to restore to previous configurations for enhanced peace of mind

Helps boost care team confidence

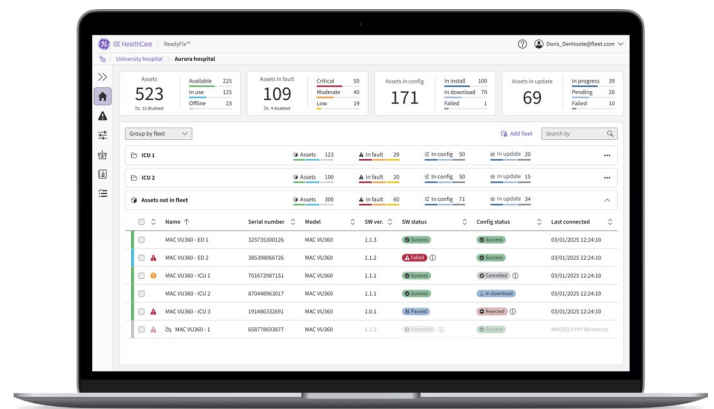
With ReadyFix, caregivers can stay focused on patients, knowing devices are consistently configured and operating at peak efficiency.

- Coordinate device updates during low-use periods to minimize disruptions to care
- Deploy standardized clinical configurations by department to enable a consistent user experience and patient protocols
- Benefit from a consistent view from device to device, reducing distractions and saving time

Delivers efficiencies across your organization

Get the most from your fleet of MAC VU360 with insights from ReadyFix.

- Enhance visibility into utilization, total cost of ownership and standards adherence to better plan capital expenditures
- Implement network configuration standards to reduce installation time and maintain device-network communication



ReadyFix user interface example



ReadyFix keeps your devices ready to go so care teams can focus on patient care. Talk to a GE HealthCare representative to learn more.

Not all products or features are available in all markets. Full product technical specification is available upon request. Contact a GE HealthCare Representative for more information. Data subject to change.

Reproduction in any form is forbidden without prior written permission from GE HealthCare. Nothing in this material should be used to diagnose or treat any disease or condition. Readers must consult a healthcare professional.

© 2025 GE HealthCare. ReadyFix is a trademark of GE HealthCare. GE is a trademark of General Electric Company used under trademark license. Use of ReadyFix is limited to ReadyFix-enabled devices.

October 2025
JB32925XX_1



GE HealthCare



GE HealthCare

Get ready. There's a new way to manage your biomedical devices.



Managing biomedical devices is critical for patient care, and time is of the essence. If you've been frustrated by a lack of visibility into your network and devices, ongoing manual troubleshooting, and downtime, you're not alone.

Now, innovations can tackle some of your biggest challenges



Knowing what devices you have
and if they're being used



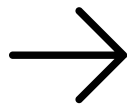
Data security and privacy



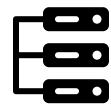
Not enough staff to manage
the workload



Downtime slowing efficiency
and putting patients at risk



Trying to get ahead of issues
instead of dealing with them
after the fact



Seeing devices and traffic on your
segregated CARESCAPE™ network

Get ready to see your devices and infrastructure—quickly, securely, and efficiently. Introducing ReadySee™.

ReadySee is a vendor-agnostic, scalable platform that gives you insights into your device inventory, behaviors and risks, and automatic monitoring for your devices and infrastructure.



Help keep your biomedical devices ready to go, so care teams can be ready to care for their patients.

Imagine what you can do with more

Device visibility

- See and find networked and patient monitoring accessories, such as PDMs and eModules
- View if a device is clinically in use*
- See devices and traffic on your segregated CARESCAPE™ network

So you can spend your time keeping crucial devices ready to go instead of looking for them

*Only available for B-series v2 patient monitors.

Comprehensive monitoring

- Get Clinical Risk Scores automatically based on device profile and behavior
- Receive alerts for infrastructure and critical traffic flows (ie, HL7, Vitals)
- View potential device vulnerabilities, such as exploits, weak ciphers, and encryption

So you can prioritize and proactively manage your device network while reducing risk

Simplified workflows

- Gain automatic visibility into newly added devices
- Choose from several API integrations, such as CMMS and identity management systems
- Self-manage policies to enable critical medical equipment communication while minimizing risk

So you can see more to secure more and help enable seamless care

If you are interested in further exploring the benefits of ReadySee, options may be available for your site to evaluate the solution. To learn more, contact your GE HealthCare representative or visit [gehealthcare.com/services/readyssee](https://www.gehealthcare.com/services/readyssee)