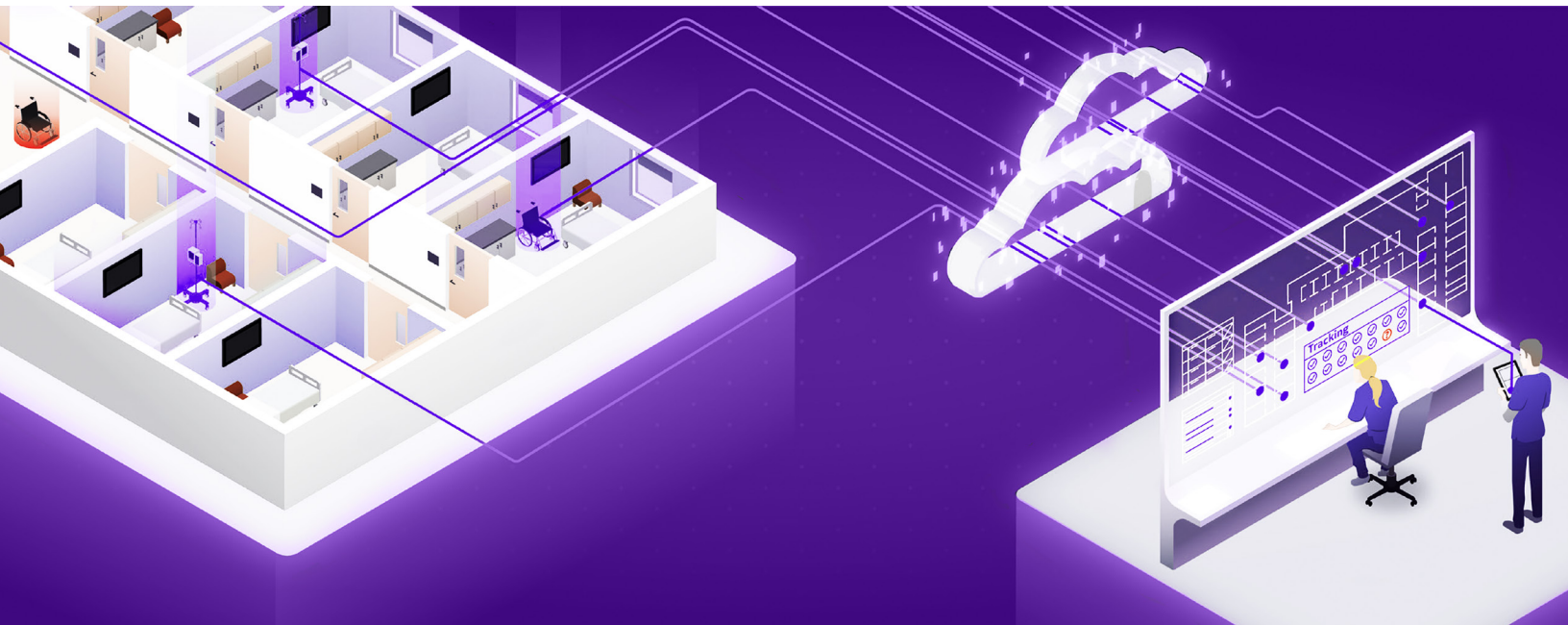


Encompass

Care more. Search less.



Encompass is a medical equipment location tracking solution that helps eliminate the search for mobile equipment. Encompass seamlessly integrates into facilities to track and manage all your mobile equipment. It tells you where your equipment is, so you can save on operating costs, prevent delays with patients and keep nurses at the bedside where they are needed most.

Fast facts:

\$714,000

is saved on mobile equipment searching per year¹

42%

of mobile equipment sits idle on average at any given time²

24,025

mobile equipment search hours saved each year¹

\$44,000

in first-year savings from reduced IV pump rentals¹

4 min

Reduce search time from 24 to 4 minutes¹

	Spend less time searching for mobile equipment
	Expedite preventive maintenance and extend your mobile equipment's service life
	Increase staff productivity and efficiency
	Improve capital allocation with accurate data to reduce rental, maintenance and labor costs
	Ensure the necessary equipment is ready when patients need it
	Reduce the potential use of non-serviced machines

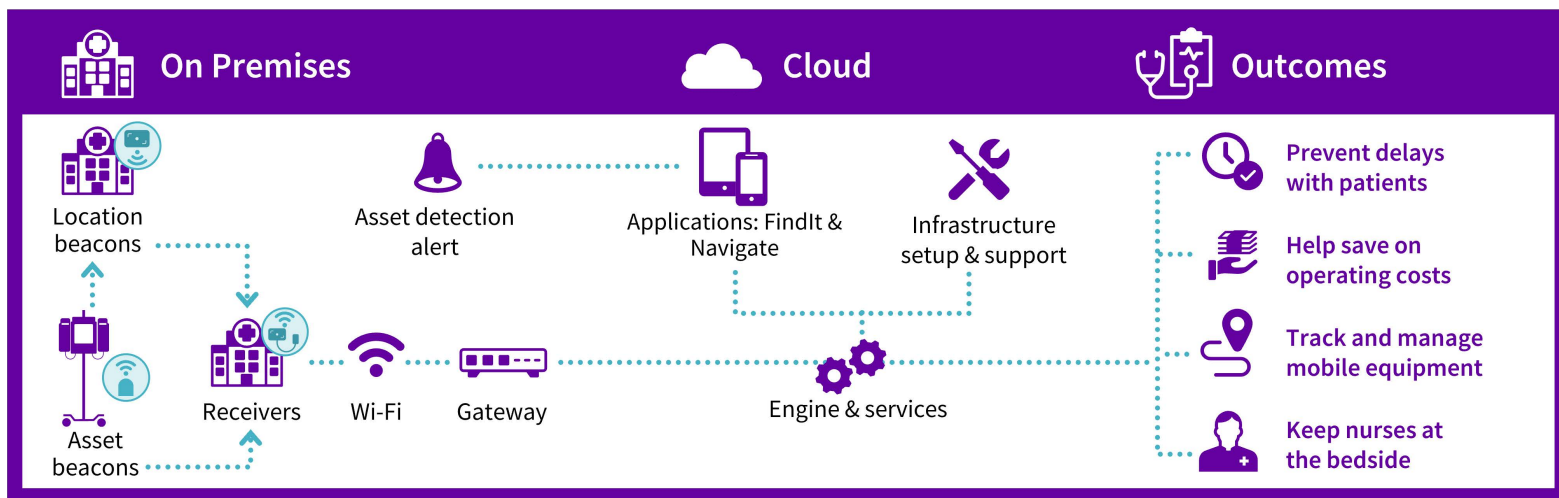
Ensure your mobile equipment is in place and ready to go

Because mobile equipment moves from room to room and passes from one user to another, its mobility inherently causes operational inefficiencies. It can be hard to maintain an accurate inventory and it can be difficult to find equipment when you need it. These inefficiencies lead to time spent away from patients in search of equipment and can cause unnecessary equipment or rental purchases.

With Encompass, you can easily and accurately track all of your mobile equipment. Web-based and cloud-deployed, it uses low-energy Bluetooth to easily integrate with your existing Wi-Fi network making installation both simple and scalable. Equipment information is displayed in a web-based application viewable on all authorized computers, phones and tablets. Locating equipment is as simple as searching the name and the Encompass application telling you where it is.

Encompass serves as a mobile equipment manager that offers real-time location services, as well as the ability to track equipment usage so you can maintain capital allocation with the right mobile equipment inventory. You'll spend less time searching, which means more time spent providing quality patient care.

The framework



1 In a small to medium size hospital (100-300 staffed beds), based on average 24-minute search time without Encompass, and four-minute search with Encompass.

2 Out of Control, Little-used Clinical Assets Draining Healthcare Budgets Whitepaper 2012.

© 2024 GE HealthCare.

GE is a trademark of General Electric Company used under trademark license.

JB29332XX

For more information on Encompass or GE HealthCare Services, please contact your local GE HealthCare representative or visit www.gehealthcare.com/products/services-landing/encompass

Not all products or features are available in all markets. Please visit <http://www.gehealthcare.com>. Data subject to change.