

SIGNA™ Champion 1.5T

For all





Our new 1.5T wide bore MRI scanner is here for all

Join our fight to create unparalleled access to exceptional diagnostic precision and uncompromised comfort for every patient, everywhere. SIGNA™ Champion is powered by advanced technologies like AIR™ Recon DL and AIR™ Coils. It also provides natural patient positioning, even for the most challenging cases. These breakthrough technologies not only improve the experience for the patient, but also for clinicians and technologists. It is simply an MRI scanner designed for all.



True patient comfort

Unparalleled access to patient clearance where it matters



A simply better setup

AIR™ Coils and AIR™ Recon DL provide great comfort, image quality and productivity



Designed for efficiency

Get efficiency and flexibility through modular hardware and software options



A secure investment for all

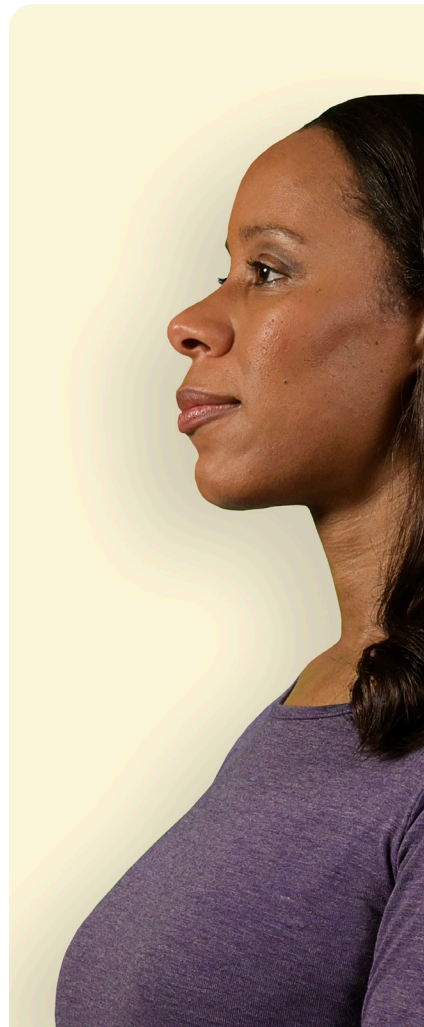
Flexible siting, green magnet and scalability help support efficient operations

True patient comfort

A wider bore makes a world of difference

Every single centimeter of clearance matters for every patient. As a true wide bore system, SIGNA™ Champion provides generous patient clearance at isocenter. More comfortable patients can lead to fewer rescans and higher throughput.

>50 cm
in-bore A/P clearance





1



2



A simply better setup, even for your most challenging cases

With SIGNA™ Champion, you have access to our blanket-like AIR™ Coils, which will completely transform your patient experience. The flexible and versatile coil design conforms to almost any part of the human body, so your patients feel more relaxed and you can get closer to the anatomy you need to see. When combined with AIR™ Recon DL, our pioneering deep-learning-based reconstruction algorithm, you'll achieve crystal clear images and even reduce scan times by up to 50%.



1. 16 ch AIR™ AA Coil
2. 20 ch AIR™ MP Coil
3. Wireless gating

Designed for efficiency with flexibility for all

SIGNA™ Champion provides a modular design with both software and hardware options ready to match your clinical priorities. It includes basic scan tools to advanced applications and image quality solutions like Sonic DL™. These applications allow you to not only optimize your routine cases, but expand into specialties like neuro, MSK, cardiac and oncology.

And that's not all. SIGNA™ Champion is capable of up to 64-channels to help streamline your coil configurations for the anatomies and clinical cases you want to focus on.

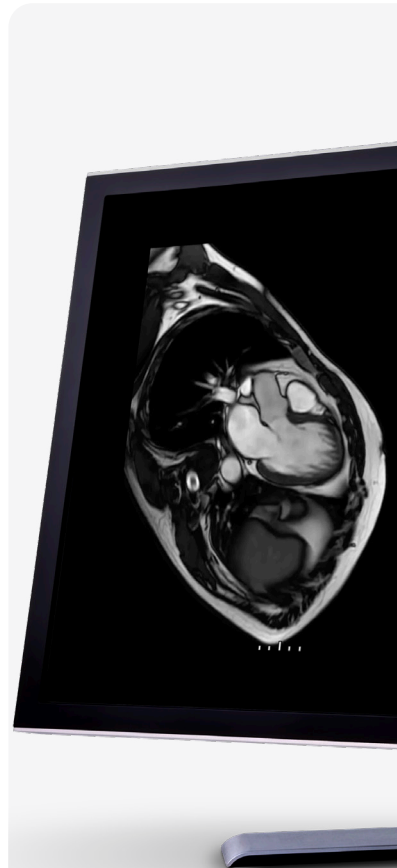
Advanced features

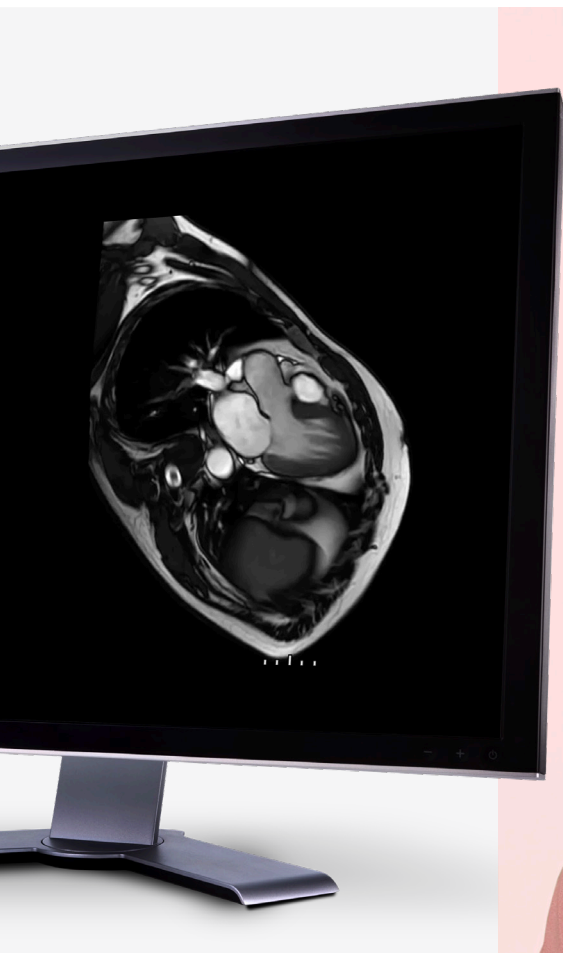
AIR Touch™

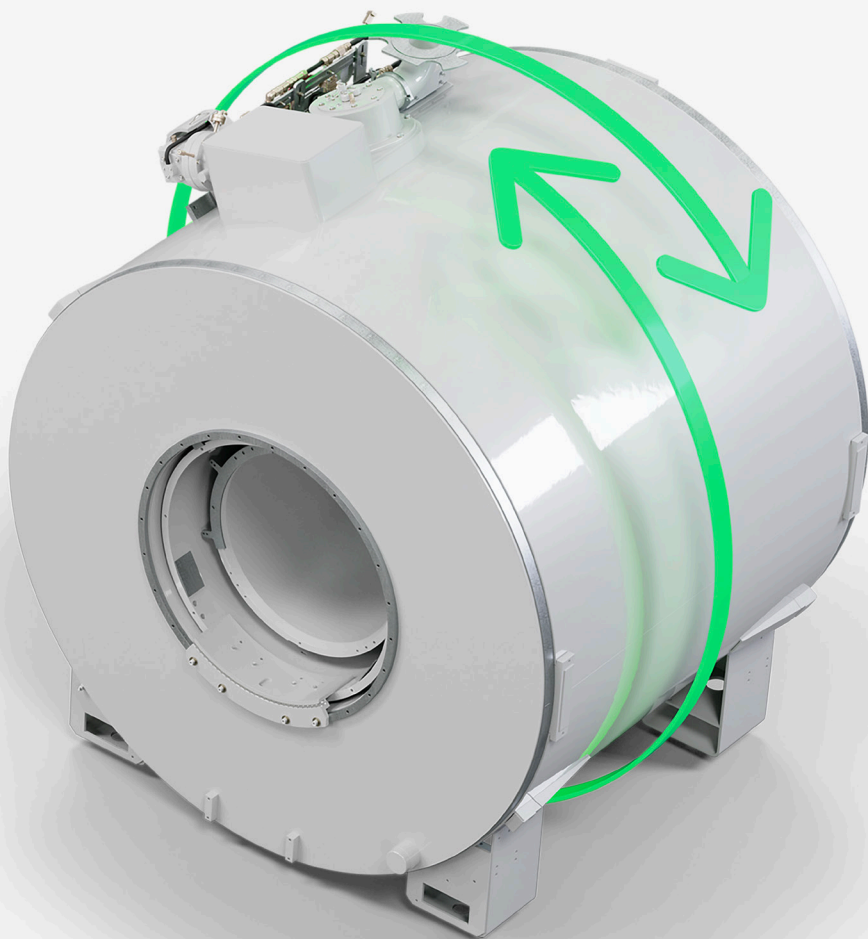
AIR x™

Sonic DL™

Up to 64 channels







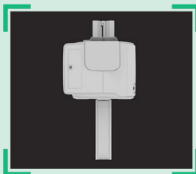
Uses
70%
less helium¹

¹ Compared to previous generation magnets

Get up and scanning, green and fast

It's never been easier to introduce or expand access to the latest MRI technology, wherever you are. We offer flexible siting, a green magnet requiring 70% less helium and scalability options to keep up with and exceed tomorrow's challenges.

Whether you have a small practice or manage a fleet of imaging centers, SIGNA™ Champion ensures a faster return on your investment. To help offset rising real estate and energy costs, SIGNA™ Champion is our smallest footprint 1.5T wide bore system and is also our most energy efficient.

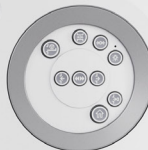


**Flexible siting with
a small footprint**

Exceptional imaging



GE HealthCare



SIGNA
Champion

Extraordinary images for all

AIR™ Recon DL takes advantage of the power of deep learning to improve MRI images and reduce scan times. This innovative AI technology increases SNR, resulting in clearer and pin-sharp images.



Conventional

Up to
60%
improvement in
image sharpness²



AIR Recon DL

Up to
50%
reduction in
scan time²

² Compared to conventional images and conventional scan times





For all

Provide the MR experience that everyone deserves

With SIGNA™ Champion, you can join us in our quest to create unparalleled access to exceptional diagnostic precision and uncompromised comfort for each and every patient.



About GE HealthCare

GE HealthCare is the \$18 billion healthcare business (NYSE: GEHC).

As a leading global medical technology and digital solutions innovator, GE HealthCare enables clinicians to make faster, more informed decisions through intelligent devices, data analytics, applications and services, supported by its Edison intelligence platform. With over 100 years of healthcare industry experience and around 50,000 employees globally, the company operates at the center of an ecosystem working toward precision health, digitizing healthcare, helping drive productivity and improve outcomes for patients, providers, health systems and researchers around the world.

Follow us on Facebook, LinkedIn, Twitter, and Insights for the latest news, or visit our website www.gehealthcare.com for more information.

