



Revolution[™] ACT

Your Aspirations. Realized.



Helping you feel **more confident**
about moving to the next level,
Clinically & economically

That's intelligent innovation.

Your Aspirations. Realized.

Veterinary medicine today offers new opportunities for growth, and the quality of CT services can make all the difference in what you're able to achieve. **Simple and fast, CT is arguably the most valuable diagnostic imaging tool in veterinary medicine.**



Redefine what's possible with CT*

Revolution™ ACT is designed not only as a product, but as a solution to easily help providing **more diagnostic confidence, clinical excellence, and better patient care while managing your financial performance.** All revolutions start somewhere. Our revolution began with the Revolution CT system — designed from the ground up for pioneering the future of CT. Revolution ACT inherits many technologies from Revolution CT system – like the new Clarity panel detector, or new user interface.

We're with you all the way

With the full support of GE Healthcare education, training and uptime services, you can offer the CT services that are most attractive to your referring veterinary surgeons and patients, do it most efficiently, and grow your value.

* Revolution ACT was designed for human use.
Testing has not been completed for veterinary use or animal applications.

We want to offer more services while still managing costs

Improve your ability to provide outstanding CT scan services while managing the overall cost of care. Revolution ACT can help reaching more patients and enable them to benefit from a full range of care.

Engineered for lower operating costs

Benefit from a proven compact geometry platform that has **minium surface room 10.1 m²**, a weight 51% lighter than previous generation and low power input requirements to ease siting and installation.

Ready when you are

Be prepared at all times with an innovative power management system. Once patients arrive, our **intelligent workflow** with many automated tools helps you achieve efficiency and higher throughput.

Stay up and running for your peace of mind

In addition to user training and applications education, benefit from the combination of remote diagnostic technologies and the support of a **large and experienced network** of GE Healthcare field and online service engineers. Our global and local supply chain helps to ensure high quality spare parts are readily available should you need them.

Expand your clinical reach

Revolution ACT is **very easy to use**, provides all the essential tools and routine clinical applications needed including vascular and perfusion. Designed to support your advanced studies with Smart Prep and Dynamic transition along with applications such as Auto Bone Xpress and Vessel IQ.



CT compact

10.1 m²



47%

lower power requirement*



Weight

51%

lighter*

* Compared to the previous generation, according to GE data.



We want to provide a more informed diagnosis

Patients are counting on you. Count on Revolution ACT to help enhance your reputation for clinical excellence. It is purposely designed to help you deliver higher quality results with more consistency and speed.

Impact patient care more profoundly

You'll clearly see more with the new Clarity panel detector design that delivers a **spatial resolution of 18 lp/cm**. And Revolution CT-based electronics with DAS on Detector (DoD) helps lower noise by 20% for better image quality.

Be more confident on anatomical details and clinical confidences

Technologies like ultra-kernel with sub-millimeter imaging gives you sharp **high resolution** images to see anatomical structures in detail and clarity.

Manage radiation dose

Provide dose-conscious care to your patients with ASiRtm* – our iterative reconstruction technology. Smart Dose gives you access to an array of dose reduction technologies for a wide variety of patients.



Lower noise by
20%
for better IQ**

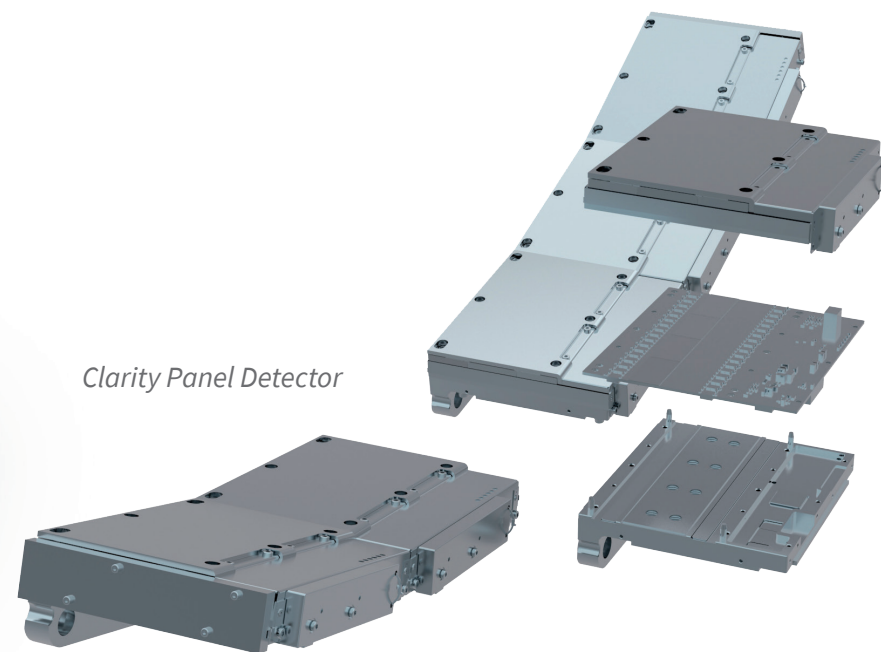


a spatial resolution of
18 lp/cm

* Compared to the previous generation, according to GE data.
Option available on selected product configurations.

** Compared to previous DAS.

Technologies that revolve around you



Clarity Panel Detector

Designed with your needs in mind, Revolution ACT helps you improve standards of patient care by providing new levels of image quality, patient safety, economic value, and advanced applications. Powering these advances is a host of integrated, largely exclusive technologies.

Improved imaging chain

Clarity panel detector

Innovative detector technology which is an industry first to introduce a **segmented panel design** with many design elements inherited from our premium Revolution CT.

Improved spatial resolution

Clarity panel detector delivers **exceptional spatial resolution of 18 lp/cm** to enable high quality imaging and visualization of anatomy in 3D.

Up to 20% lower electronic noise

An integrated detector design built with modern chipsets and DAS on detector (DoD) technology used in our premium Revolution CT to **lower noise** and achieve high signal to noise performance.

Low power efficient design

A compact and power efficient design, each detector module consumes a paltry 2mW per channel. **Intelligent thermal management** is tightly integrated within the detector so it is ready to scan within minutes.

Ultra Kernel

Adaptive Enhance Level Adjustment (AELA) can improve visual **spatial resolution** while maintaining pixel noise standard deviation. This kernel may be helpful in enhancing the visualization of small anatomical structures with high contrast.

Overlap reconstruction*

A higher sampling density provides better representation of the original signal and can potentially lead to improved image quality and fidelity. Using GE's conjugate cone beam reconstruction algorithm, the conjugated rows of projections are considered jointly in the back-projection step and delivers improved Z-axis **visualization performance**.

* Option available on selected product configurations.

Enhance your impACT

The wheels of innovation have not stopped rolling. Experience a remarkable clinical performance, exceptional image clarity, enhanced user workflow, and higher productivity – all within your reach.

User Console

Inspired by our most premium product, Revolution CT, the console of Revolution ACT has been designed from the ground up to make it **easy to learn and use, saving 79% of clicks***. Its modern look and feel is created from insights obtained from a wide cross section of radiologists and technologists.

Auto Exam Description

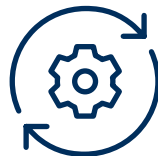
This advancement offers pre-programmed common exam description types in the protocol setup. It provides exam description, automatically tied up to the selected scan and reduces manual steps and scan setup time.

IQ Enhance

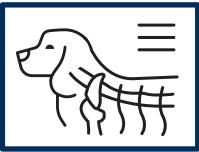
This advanced algorithm enables **helical pitch acceleration up to 3.0x** while still achieving the same image quality as a conventional scan.

DMPR

Enable Direct Multi Planar Reformats directly in real time. DMPR reduces manual steps and processing time and simplifies advanced processing. 10 sets of prospective multiple reconstructions.



Experience enhanced imaging workflow



Elevate clinical performance

79%
Less clicks



* Compared to the previous generation. According to GE data.

Essential and advanced applications*

Volume Viewer

Harness the power of Volume Viewer to **make 3D visualization routine**. Get more information about the spatial relationships of different structures using multi-object volume rendering, multi-planar reformat, and MIP/min-MIP.

Navigation and Fly-Through

Use **Virtual Endoscopy** to visualize intra-luminal structures such as airways, sinuses, or vascular structures. A virtual “fly-through” mode lets you view images dynamically.

SmartPrep with Dynamic Transition

SmartPrep allows intermittent monitoring of IV contrast enhancement in an area of interest using low-dose scan. Dynamic transition provides **automatic** transition from monitor phase to scan phase.

Vascular Imaging and Processing

Allows enhanced analysis of vascular features by **automatically determining vessel centerline and tracking** multiple vessels. You can also view oblique cross sections of vascular images, and rotate curved views to more clearly visualize vascular lesions.

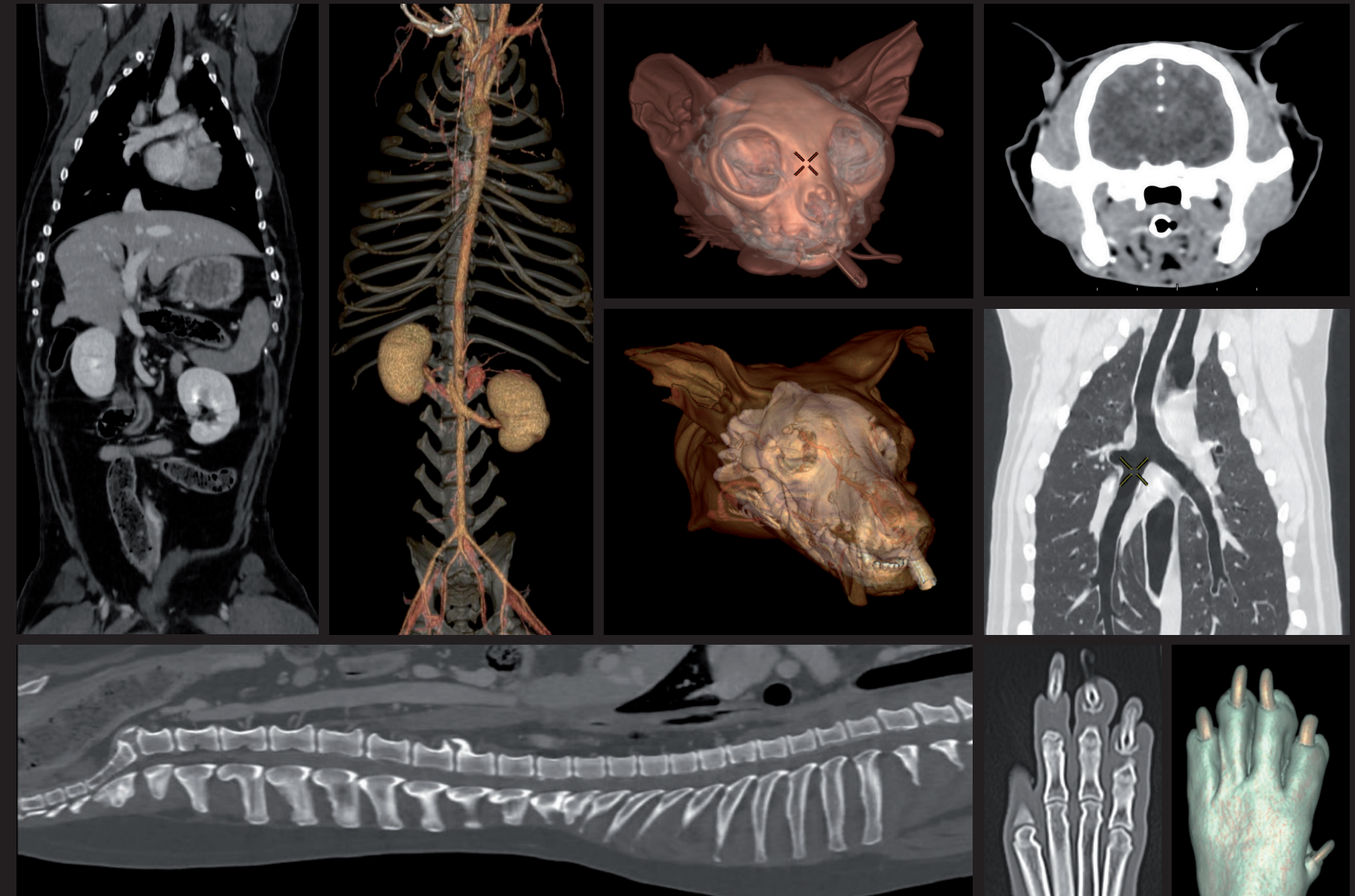
CT Colonography

Provides quick, accurate, noninvasive colon exams. Prone and supine views can be displayed and synchronized together. You can even conduct a 3D fly-through that resembles an optical colonoscopy. Bookmarking tools mark polyp location, and distance and ROI tools quantify size and homogeneity.

Advanced visualization powered AW - VolumeShare 7**

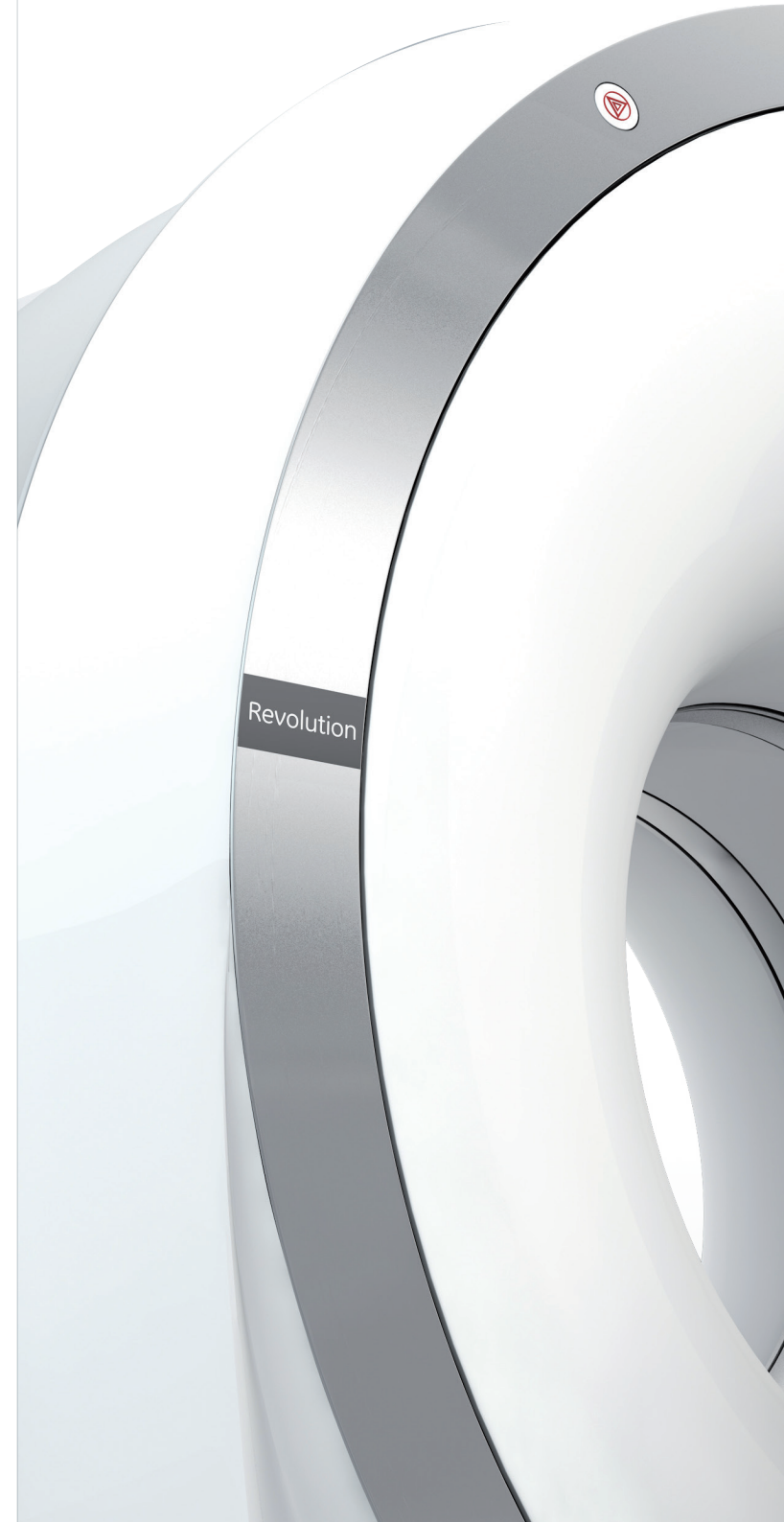
The AW VolumeShare 7 workstation gives you **powerful capabilities** aimed at increasing your diagnostic confidence, reducing your operating costs, and improving your departmental productivity.

Clinical excellence everyday



* Revolution ACT was designed for human use. Testing has not been completed for veterinary use or animal applications.

** Option available on selected product configurations.



What are your aspirations?

In the end, Revolution ACT helps providing better patient care to more patients in an affordable way.

Revolution ACT is designed in a way that reduces the typical tradeoffs you face between quality and affordability.

Revolution ACT gives you investment security by opening the door to a host of modern technologies; a more informed diagnosis with higher image quality and wider array of clinical applications; and a patient centric workflow.

Since physicians began scanning patients with GE CT systems in 1976, few companies can point to the same number of advances to help taking better care of patients and do it more economically. Your reputation depends on making the right choices. Ours depends on helping you make them.

WeConnect

Your Clinical Education Community

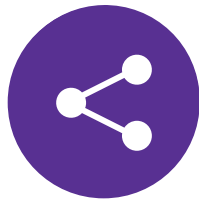


Expand your skills, learn about the latest trends, and share information with peers and GE HealthCare applications experts.



Connect

With experts according to specialty and location



Share

Information with other professionals, publish, build your expertise and audience



Learn

New skills and get the most from your GE HealthCare equipment

It's easy to get started with WeConnect!



Register here



Instructions



About GE HealthCare Technologies Inc.

About GE HealthCare GE HealthCare is a leading global medical technology, pharmaceutical diagnostics, and digital solutions innovator, dedicated to providing integrated solutions, services, and data analytics to make hospitals more efficient, clinicians more effective, therapies more precise, and patients healthier and happier. Serving patients and providers for more than 100 years, GE HealthCare is advancing personalized, connected, and compassionate care, while simplifying the patient's journey across the care pathway. Together our Imaging, Ultrasound, Patient Care Solutions, and Pharmaceutical Diagnostics businesses help improve patient care from diagnosis, to therapy, to monitoring. We are a \$19.6 billion business with 51,000 colleagues working to create a world where healthcare has no limits. Follow us on LinkedIn, X (formerly Twitter), and Insights for the latest news, or visit our website

www.gehealthcare.com for more information.

