



▶ **Enabling Breast Imaging & Decision Support**

LOGIQ E10 Series

EMPOWERING YOU TO MAKE THE DIFFERENCE

Diagnostic confidence for answers patients can trust

CLINICAL CHALLENGE

Detecting and characterizing breast disease, especially in women with dense tissue, can be challenging. Radiologists and sonographers need the highest quality imaging combined with productivity tools to provide definitive answers as efficiently as possible.

GE SOLUTION

The LOGIQ™ E10 Series helps you make a real difference in the lives of patients with breast disease. The systems' cSound™ Architecture provides images of excellent detail and contrast resolution for greater diagnostic confidence, while new AI-based workflow tools help increase exam efficiency.



Confident diagnosis

The LOGIQ E10 Series enables clinicians to acquire extraordinary images across a broad spectrum of patients. The system's next-generation image platform delivers high penetration power.

Auto-optimized images: The cSound Imageformer automatically and continuously delivers top-to-bottom focus, with high spatial and contrast resolution. Images of extraordinary quality are quickly acquired, with an efficiency that particularly benefits technically challenging cases.

Micro Vascular Imaging (MVI): High-definition flow mode helps clinicians identify tiny vessels in lesions and lymph nodes.

Choice of high-performance probes: Select from E-Series and XDclear™ probes, including high-frequency and matrix probes designed for breast applications.

Comprehensive tools

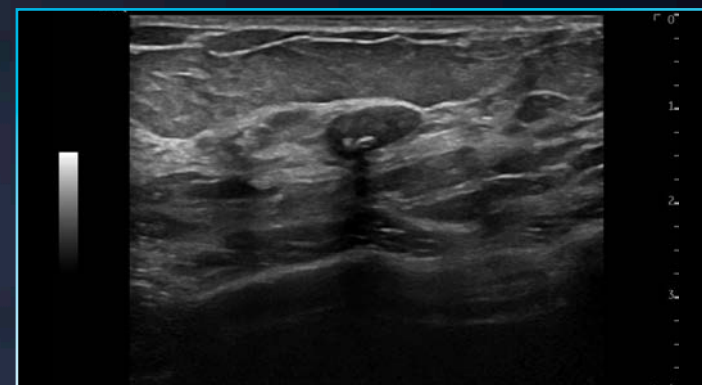
The LOGIQ E10 Series provides robust tools that give clinicians a new level of confidence in their diagnostic decisions.

2D Shear Wave Elastography: Enables non-invasive assessment of lesion stiffness in breast while integrating smoothly with department workflow. Now available with a Shear Wave Elastography Quality Indicator to support confident measurements. Strain elastography is also available for semi-quantitative tissue assessment.

Compare Assistant: Enables clinicians to easily view a prior study – ultrasound, mammography, CT or MR – and compare with current images in real time via a split screen on the monitor, helping to improve confidence and exam efficiency.

Volume Navigation with Fusion Imaging: Merge real-time ultrasound with a volume DICOM® MR dataset to facilitate second-look examinations and fusion guidance of biopsies of masses seen on MRI but not on ultrasound. Datasets from Invenia™ automated breast ultrasound system (ABUS) can also be merged via Fusion Imaging.

Contrast-Enhanced Ultrasound: Get a clear picture of tissue structure and suspicious mass vascularity by optimizing the balance between penetration and resolution for improved contrast sensitivity. Using TIC and the raw data cine clip, clinicians can easily analyze the speed, intensity and dispersion of contrast microbubbles to assess wash-in/wash-out curves of multiple regions of interest.



ML6-15 B-Mode Imaging of the breast

Concise workflow*

The LOGIQ E10 Series can help radiology departments reduce the time required for evaluation of breast lesions while improving standardization in the reporting process.

Breast Assistant: Breast Assistant, powered by Koios DS™, automatically provides an AI-based quantitative risk assessment that aligns to a BI-RADS® ATLAS category and generates a color-coded confidence scale to assist in lesion classification. Results are available in two seconds or less, providing decision support for the clinician, and helping to improve consistency across the department.

Breast Productivity Package: This software enhances speed and standardization in lesion reporting by:

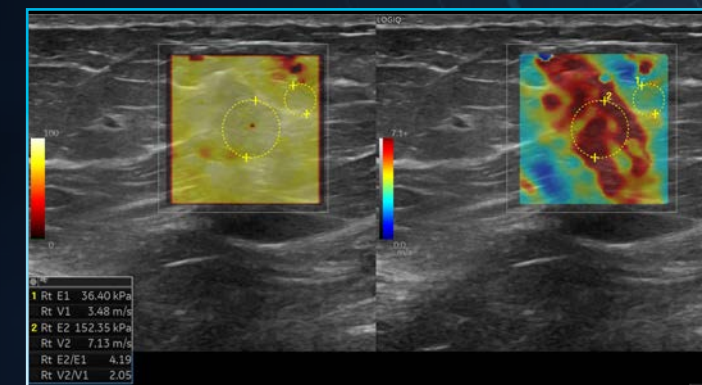
- Automating the labeling, measuring, and description of breast lesions
- Integrating the BI-RADS® lexicon to enhance structured reporting
- Auto-populating exam findings to organize data in a standardized format
- Creating a summary report that consolidates relevant information for easy review

Auto Lesion Segmentation: This AI-based productivity tool automatically traces lesion boundaries and generates two-dimensional measurements with just a few keystrokes.

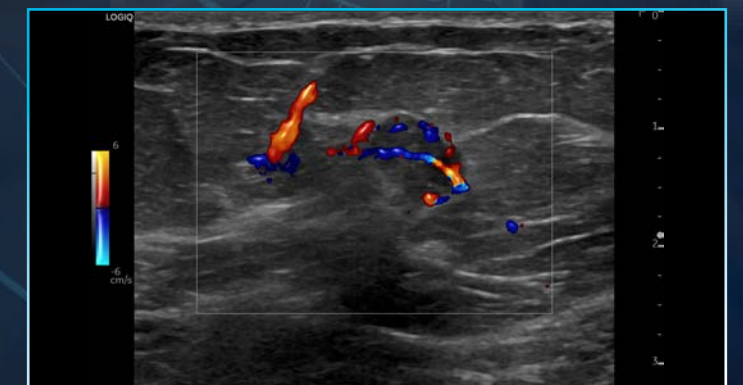
Raw Data: Expanded capabilities enable users to apply a wide variety of image processing and quantification after the exam and while using Compare Assistant. This allows the operator to extract and reanalyze information without extending exam time.

DICOM SR/linked image: Structured reporting formats feature embedded measurements and link directly to ultrasound images to add efficiency and precision to workflow.

*Not available in all regions.



Shear Wave Elastography Quality Indicator with measurement, ML6-15-D



PDI using Radiantflow™ of breast mass, ML6-15-D





> Smart investment

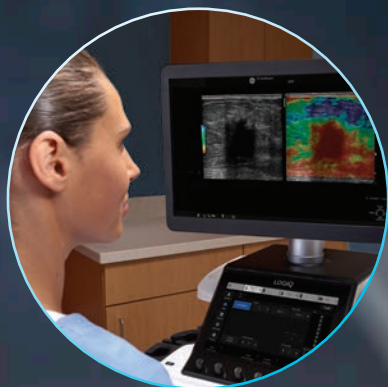
GE Healthcare accelerates innovation with the LOGIQ E10 Series – making it the smart choice for now and in the future. The systems are available with a full suite of robust features and scalable options.

A to A digital platform: Stay at the forefront of clinical imaging with our A to A digital platform, specifically engineered so you can add next-generation capabilities in the years ahead.

Familiar user interface: The new LOGIQ E10 Series offers greater functionality while maintaining the ease of operation and satisfying user experience that has become a hallmark of LOGIQ interface design.

SonoDefense: GE Healthcare's multi-layer approach to cybersecurity helps keep the systems safe and functional in the face of cyberthreats and helps protect patient data from unauthorized access.

Digital support: Wide choice of efficiency tools to help users, administrators, and operations staff improve productivity, including remote preset management, performance analytics, software/security updates, live clinical training, and advanced system diagnostics.



Product may not be available in all countries and regions. Full product technical specifications are available upon request. Contact a GE Healthcare Representative for more information. Please visit www.gehealthcare.com/promotional-locations.

Data subject to change.

© 2020 General Electric Company – All rights reserved.

GE, the GE Monogram, imagination at work, LOGIQ, XDclear, Invenia, Radiantflow and cSound are trademarks of General Electric Company. DICOM is a trademark of the National Electrical Manufacturers Association. Koios DS is a trademark of Koios Medical, Inc. BI-RADS and BI-RADS ATLAS are registered trademarks of the American College of Radiology. All rights reserved.

Reproduction in any form is forbidden without prior written permission from GE. Nothing in this material should be used to diagnose or treat any disease or condition. Readers must consult a healthcare professional.

To determine whether individual features are standard or optional, consult with your GE Healthcare sales representative.

April 2020 JB78140XX



Powered By
Edison