

GE Healthcare



# Revolution ACT

Your Aspirations. Realized.





Helping you feel  
**MORE CONFIDENT**  
about moving to the next level,  
**CLINICALLY &  
ECONOMICALLY**  
— that's intelligent  
innovation.

# Your Aspirations. Realized.

*Veterinary medicine today offers new opportunities for growth, and the quality of CT services can make all the difference in what you're able to achieve. Simple and fast, CT is arguably the most valuable diagnostic imaging tool in veterinary medicine.*



**Redefine what's possible with CT\***  
Revolution™ ACT is designed not only as a product, but as a solution to easily help providing **more diagnostic confidence, clinical excellence, and better patient care while managing your financial performance.** All revolutions start somewhere. Our revolution began with the Revolution CT system — designed from the ground up for pioneering the future of CT. Revolution ACT inherits many technologies from Revolution CT system – like the new Clarity panel detector, or new user interface.

**We're with you all the way**  
With the full support of GE Healthcare education, training and uptime services, you can offer the CT services that are most attractive to your referring veterinary surgeons and patients, do it most efficiently, and grow your value.

\* Revolution ACT was designed for human use. Testing has not been completed for veterinary use or animal applications.

# We want to offer **more services** while still **managing costs**

Improve your ability to provide outstanding CT scan services while managing the overall cost of care. Revolution ACT can help reaching more patients and enable them to benefit from a full range of care.

## Engineered for lower operating costs

Benefit from a proven compact geometry platform that has **minium surface room 10.1 m<sup>2</sup>**, a weight 51% lighter than previous generation and low power input requirements to ease siting and installation.

## Ready when you are

Be prepared at all times with an innovative power management system. Once patients arrive, our **intelligent workflow** with many automated tools helps you achieve efficiency and higher throughput.

## Stay up and running for your peace of mind

In addition to user training and applications education, benefit from the combination of remote diagnostic technologies and the support of a **large and experienced network** of GE Healthcare field and online service engineers. Our global and local supply chain helps to ensure high quality spare parts are readily available should you need them.

## Expand your clinical reach

Revolution ACT is **very easy to use**, provides all the essential tools and routine clinical applications needed including vascular and perfusion. Designed to support your advanced studies with Smart Prep and Dynamic transition along with applications such as Auto Bone Xpress and Vessel IQ.

CT compact

10.1  
m<sup>2</sup>

47%

LOWER POWER  
requirement\*



WEIGHT

51%  
LIGHTER\*

\* Compared to the previous generation, according to GE data.



# We want to provide a more **informed diagnosis**

Patients are counting on you. Count on Revolution ACT to help enhance your reputation for clinical excellence. It is purposely designed to help you deliver higher quality results with more consistency and speed.

#### **Impact patient care more profoundly**

You'll clearly see more with the new Clarity panel detector design that delivers a **spatial resolution of 18 lp/cm**. And Revolution CT-based electronics with DAS on Detector (DoD) helps lower noise by 20% for better image quality.

#### **Be more confident on anatomical details and clinical confidences**

Technologies like ultra-kernel with sub-millimeter imaging gives you sharp **high resolution** images to see anatomical structures in detail and clarity.

#### **Manage radiation dose**

Provide dose-conscious care to your patients with ASiR™\* – our iterative reconstruction technology. Smart Dose gives you access to an array of dose reduction technologies for a wide variety of patients.

**LOWER NOISE**

by **20%** for better IQ\*\*

a spatial resolution of

**18**  
lp/cm

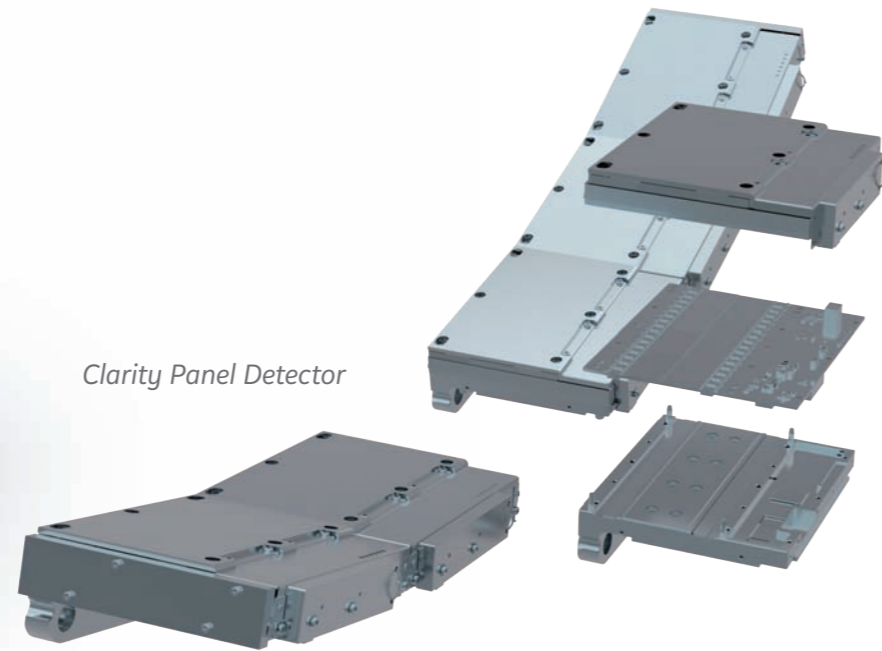
\* Compared to the previous generation, according to GE data.  
Option available on selected product configurations.  
\*\* Compared to previous DAS.

# Technologies that revolve around you



Designed with your needs in mind, Revolution ACT helps you improve standards of patient care by providing new levels of image quality, patient safety, economic value, and advanced applications. Powering these advances is a host of integrated, largely exclusive technologies.

## Improved imaging chain



Clarity Panel Detector

### Clarity panel detector

Innovative detector technology which is an industry first to introduce **a segmented panel design** with many design elements inherited from our premium Revolution CT.

### Improved spatial resolution

Clarity panel detector delivers **exceptional spatial resolution of 18 lp/cm** to enable high quality imaging and visualization of anatomy in 3D.

### Up to 20% lower electronic noise

An integrated detector design built with modern chipsets and DAS on detector (DoD) technology used in our premium Revolution CT to **lower noise** and achieve high signal to noise performance.

### Low power efficient design

A compact and power efficient design, each detector module consumes a paltry 2mW per channel. **Intelligent thermal management** is tightly integrated within the detector so it is ready to scan within minutes.

### Ultra Kernel

Adaptive Enhance Level Adjustment (AELA) can improve visual **spatial resolution** while maintaining pixel noise standard deviation. This kernel may be helpful in enhancing the visualization of small anatomical structures with high contrast.

### Overlap reconstruction\*

A higher sampling density provides better representation of the original signal and can potentially lead to improved image quality and fidelity. Using GE's conjugate cone beam reconstruction algorithm, the conjugated rows of projections are considered jointly in the back-projection step and delivers improved Z-axis **visualization performance**.

\*Option available on selected product configurations.

# Enhance your **impACT**

The wheels of innovation have not stopped rolling. Experience a remarkable clinical performance, exceptional image clarity, enhanced user workflow, and higher productivity – all within your reach.

## User Console

Inspired by our most premium product, Revolution CT, the console of Revolution ACT has been designed from the ground up to make it **easy to learn and use, saving 79% of clicks\***. Its modern look and feel is created from insights obtained from a wide cross section of radiologists and technologists.

## Auto Exam Description

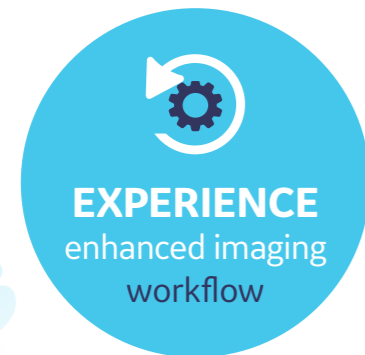
This advancement offers pre-programmed common exam description types in the protocol setup. It provides exam description, automatically tied up to the selected scan and reduces manual steps and scan setup time.

## IQ Enhance

This advanced algorithm enables **helical pitch acceleration up to 3.0x** while still achieving the same image quality as a conventional scan.

## DMPR

Enable Direct Multi Planar Reformats directly in real time. DMPR reduces manual steps and processing time and simplifies advanced processing. 10 sets of prospective multiple reconstructions.



\* Compared to the previous generation. According to GE data.

# Essential and advanced applications\*

## Volume Viewer

Harness the power of Volume Viewer **to make 3D visualization routine**. Get more information about the spatial relationships of different structures using multi-object volume rendering, multi-planar reformat, and MIP/min-MIP.

## Navigation and Fly-Through

Use **Virtual Endoscopy** to visualize intra-luminal structures such as airways, sinuses, or vascular structures. A virtual “fly-through” mode lets you view images dynamically.

## SmartPrep with Dynamic Transition

SmartPrep allows intermittent monitoring of IV contrast enhancement in an area of interest using low-dose scan. Dynamic transition provides **automatic** transition from monitor phase to scan phase.

## Vascular Imaging and Processing

Allows enhanced analysis of vascular features by **automatically determining vessel centerline and tracking** multiple vessels. You can also view oblique cross sections of vascular images, and rotate curved views to more clearly visualize vascular lesions.

## CT Colonography

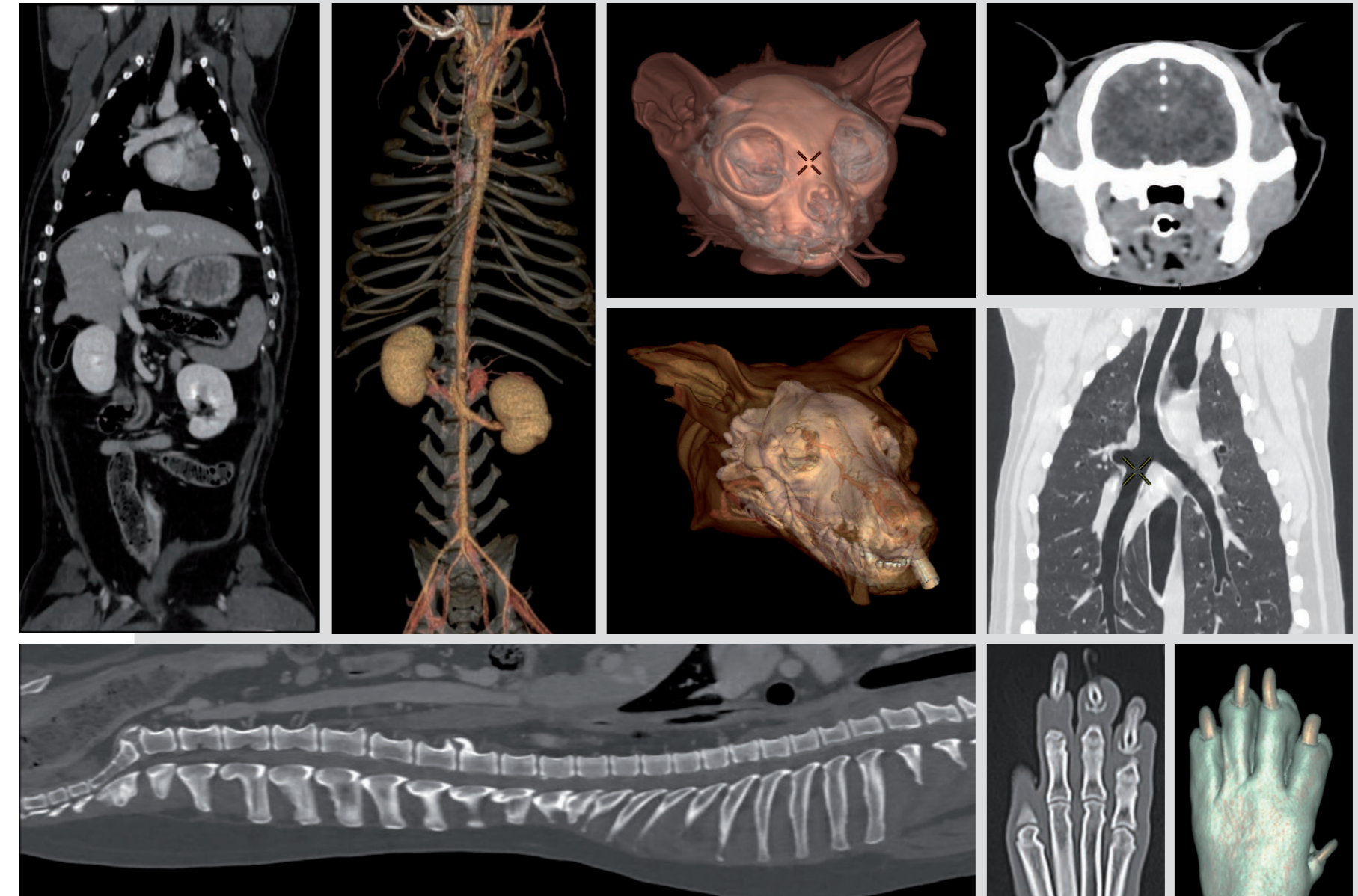
Provides quick, accurate, noninvasive colon exams. Prone and supine views can be displayed and synchronized together. You can even conduct a 3D fly-through that resembles an optical colonoscopy. Bookmarking tools mark polyp location, and distance and ROI tools quantify size and homogeneity.

## Advanced visualization powered AW - VolumeShare 7\*\*

The AW VolumeShare 7 workstation gives you **powerful capabilities** aimed at increasing your diagnostic confidence, reducing your operating costs, and improving your departmental productivity.

\* Revolution ACT was designed for human use. Testing has not been completed for veterinary use or animal applications.

\*\* Option available on selected product configurations.



Clinical excellence everyday



# What are your aspirations?

*In the end, Revolution ACT helps providing better patient care to more patients in an affordable way.*

**Revolution ACT** is designed in a way that reduces the typical tradeoffs you face between quality and affordability.

**Revolution ACT** gives you investment security by opening the door to a host of modern technologies; a more informed diagnosis with higher image quality and wider array of clinical applications; and a patient centric workflow.

Since physicians began scanning patients with GE CT systems in 1976, few companies can point to the same number of advances to help taking better care of patients and do it more economically.

Your reputation depends on making the right choices. Ours depends on helping you make them.





# GECARES.COM your community & education tools

Join a community of exchanges where you can learn, share, connect with your peers:  
**GECares.com**

## Appslinq™ Your personalized online support

If you have any question related to the use of GE equipment, contact of our experts and get your question answered.

Benefit from a personalized online support during your procedures with Appslinq

## Live Expert webinars

### Your interactive online training sessions

Register for the clinical webinars and benefit from the experience of experts helping you improve your technical and clinical practise

## Trainings

### Your Learning platform

Access online video trainings, educational contents, e-learnings, built by experts for experts

GE Cares is a community where you connect with healthcare professional, share your experience, publish contents and learn new techniques by having a direct access at the clinical webinars, protocols, clinical cases helping you improve your skills. You can also contact GE application specialists whenever you need to ask a question or get supported.

# GE Cares community

*Learn how to capitalize on online resources to facilitate trainings and increase your professional skills.*



Join us now on **GECARES.COM**



## LEARN

Learn new techniques and increase your skills in your daily practice. Access online trainings, educational contents, clinical webinars built by experts for experts.



## CONNECT

Connect with other healthcare professionals and grow your network. Interact with key opinion leaders and view their publications.



## SHARE

Share your experience, publish content and stay up to date with the latest clinical trends shared by your peers.

# NOTES

---

---

---

---

---

---

---

---

---

---

---

---

---

---

---

---

---

---

---

---

---

---

---

---

---

---

---

---

---

---

---

---

---

---

---

---

---

---

---

---

---

---

---

---

---

---

---

---

---

---

---

---

---

---

---

---

---

---

---

---





## gehealthcare.com

GE Healthcare provides transformational medical technologies and services to meet the demand for increased access, enhanced quality and more affordable healthcare around the world.

GE works on things that matter - great people and technologies taking on tough challenges. From medical imaging, software & IT, patient monitoring and diagnostics to drug discovery, biopharmaceutical manufacturing technologies and performance improvement solutions, GE Healthcare helps medical professionals deliver great healthcare to their patients.

GE Healthcare  
Chalfont St.Giles,  
Buckinghamshire,  
UK

## GE imagination at work



GE Healthcare, Europe  
Headquarters Buc, France  
+33 800 90 87 19

GE Healthcare, Middle East and Africa  
Istanbul, Turkey  
+ 90 212 36 62 900

GE Healthcare, North America  
Milwaukee, USA  
+ 1 866 281 7545

GE Healthcare, Latin America  
Sao Paulo, Brazil  
+ 55 800 122 345

GE Healthcare, Asia Pacific  
Tokyo, Japan  
+ 81 42 585 5111

GE Healthcare, ASEAN  
Singapore  
+65 6291 8528

GE Healthcare, China  
Beijing, China  
+ 86 800 810 8188

GE Healthcare, India  
Bangalore, India  
+91 800 209 9003

Data subject to change. JB47849FR  
© 2017 General Electric Company.

GE, the GE Monogram, imagination at work, ASiR and Revolution are trademarks of General Electric Company.  
All GE datas available in DOC1774383\_ACT\_ACTs Product Technical Claims\_V2.0.1 (1).docx