



GE HealthCare

ULTRASOUND FOR MUSCULOSKELETAL IMAGING  
V2

# Versana Balance™ Touch Edition

Care with Confidence



[gehealthcare.com](http://gehealthcare.com)



# QUICK, EFFICIENT IMAGING FOR A BROAD RANGE OF PATIENTS

Whether you're working in a private clinic or another musculoskeletal setting, you can count on durable and dependable Versana Balance to deliver world-class care with no compromise on image quality.

Practical and versatile, this system supports a wide range of common musculoskeletal ultrasound examinations and enables quick, efficient scanning to diagnose a broad range of musculoskeletal conditions.

**Competent. Efficient. Practical.**  
*World-class ultrasound designed for peace of mind.*



Excellent image quality



Multi-gesture functionality\* enabled by a sensitive touch panel\* that results in an intuitive, intelligent workflow



Expert service and support



Flexible financing options



Flexibility to grow

\*Available on Versana Balance V2.

# A PARTNER YOU CAN TRUST

## Reach new levels of clinical excellence

With image quality that ranks with best in its class, you can reach new levels of clinical excellence. Versana Balance is well-suited for assessing muscles, joints and supportive tissue. Proven functionalities include:

- Define structure borders clearly with **CrossXBeam™** and **SRI-HD**
- Obtain intuitive representation of non-quantitative hemodynamics in vascular structures with **B-Flow** and **B-Flow Color** imaging
- Evaluate musculoskeletal inflammatory diseases with **power Doppler**
- Extend views with panoramic imaging using **LOGIQ™ View**

## Expert, dependable service and support

- Easy **e-delivery\*\*** of software updates
- **E-IFU\*** (electronic user manuals) for convenient access to product information
- **Probe Check\*** evaluates probe element performance, facilitating system maintenance



\*Available on Versana Balance V2.

\*\*Offerings may vary by country or region. Please check with your local GE Healthcare representative.

# A COMPLETE SOLUTION

## A competent, practical system for efficient imaging

Key features on Versana Balance allow you to enjoy a streamlined workflow and greater productivity. You can also count on clinical support and service excellence to help you get the most out of your system.



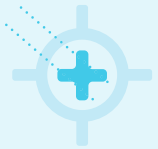
Optimize images while scanning with **Whizz Dynamic Image Tuning**



Enhance or suppress the color flow signal with **Whizz Color Flow\***



Create custom exam protocols and standardized workflows with **Scan Assistant**



Adjust needle gain and angle when you add **Needle Recognition Software**, which provides precise and accurate display of the needle, anatomy and motion



Make automated **2D Measurements** and **Volume Calculations** in certain applications



Upload images and reports to the **Tricefy™ Cloud\*\*\*** or network storage (EMR, PACS) for consultation or sharing with patients



Easily compare current and prior exams and track treatment progress with **Follow-Up Tool**



Add **Voice Comments** to exams



Use **templates** to create custom reports

\*Available on Versana Balance V2.

\*\*\*Requires internet connection and a Tricefy subscription.



## CHECK OUT THESE CONVENIENT FEATURES



Flexible monitor

+ Large display



Height-adjustable console\*\*

Multi-gesture touch panel\*\*



Switchable gel warmer



Multiple probe holders

Cable management system



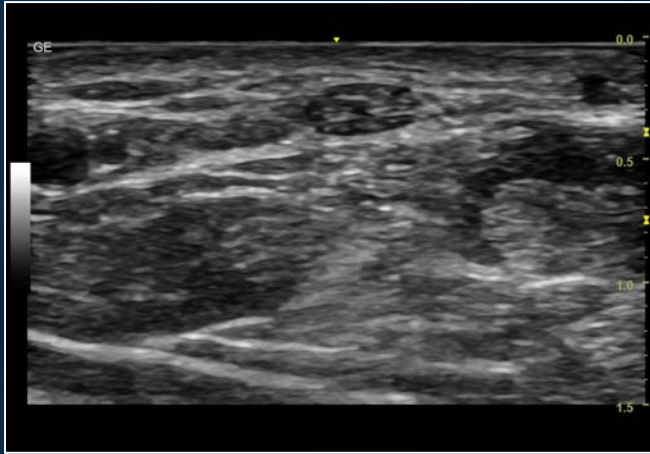
Front-facing probe connectors for easy access

Storage bin

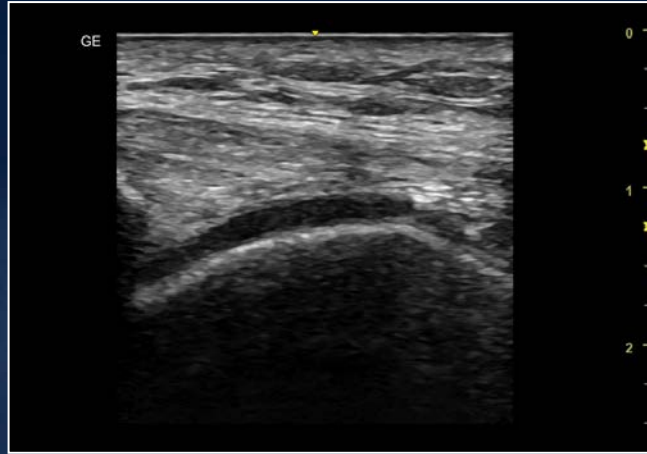
+ Compact footprint

\*\*Offerings may vary by country or region. Please check with your local GE Healthcare representative.

# IMAGE GALLERY



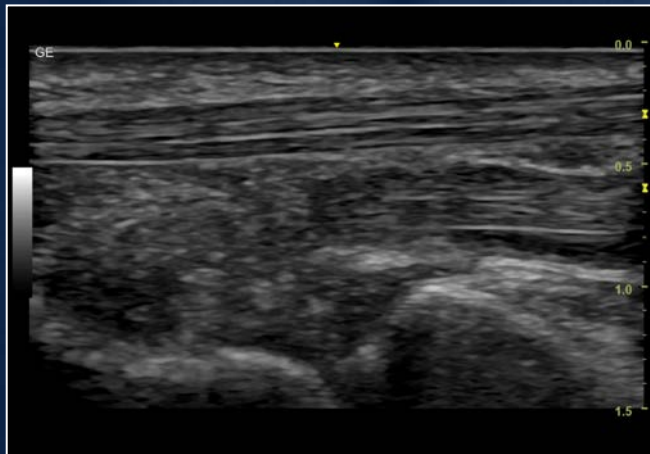
L8-18i-RS\* median nerve



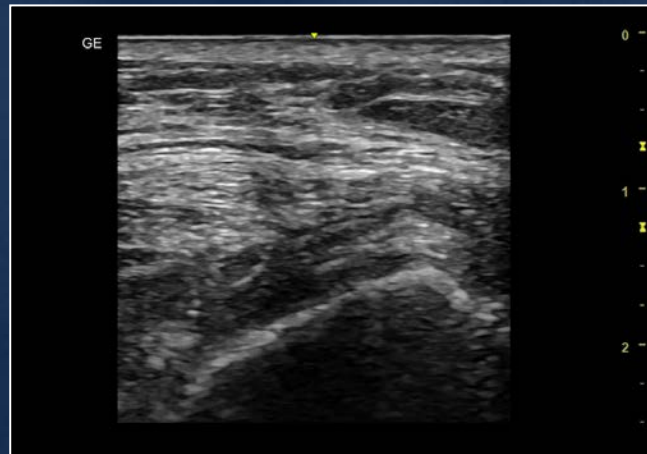
Patellar joint space



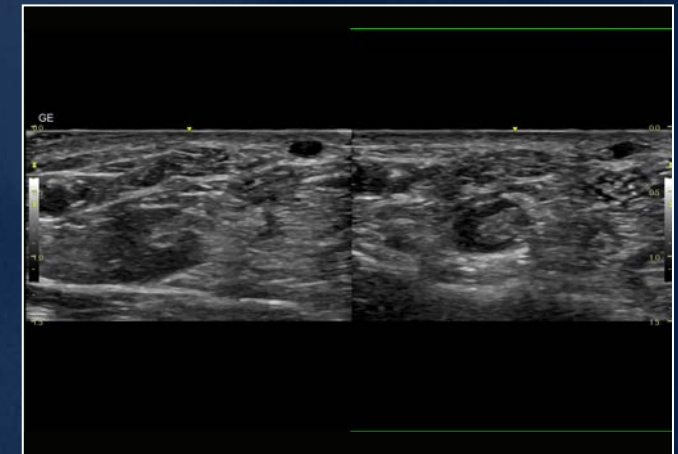
Biceps tendon



Whizz median nerve



Patella



Follow-Up Tool median nerve

# AN OPPORTUNITY FOR GROWTH

## Ultrasound that serves you well today and into the future

Versana Balance is designed to grow with you. Start with a console and software package and add probes and optional upgrades as you go.

The expanded probe family includes:

- **4C-RS** – wide band convex array probe for near-field resolution and detail definition with abdominal, OB/GYN and pediatric imaging
- **L6-12-RS** – linear array probe for resolution with superficial imaging
- **12L-RS** – wide band linear array probe for resolution with superficial imaging
- **L8-18i-RS\*** – multi-purpose, high frequency linear probe for musculoskeletal exams, small parts, vascular and superficial scanning
- **8C-RS** – micro convex probe for detailed pediatrics and neonatal imaging



## Advance your ultrasound skills with Versana Club

Versana Club offers resources to help you build your skills, network with others and share your ultrasound knowledge. Membership perks include:

- Image-sharing with peers around the world
- Web-based video tutorials and other educational offerings
- Information on Versana service solutions and products
- Articles on ultrasound and patient care

Register now at [www.versanaclub.net](http://www.versanaclub.net)

\*Available on Versana Balance V2.



# GE HealthCare

Products mentioned in the material may be subject to government regulation and may not be available in all countries. Shipment and the effective sale can only occur after approval from the regulator. Contact your GE representative for details.

© GE, 2022

GE Healthcare reserves the right to make changes in specifications and features shown herein, or discontinue the product described at any time without notice or obligation. Contact your GE Healthcare representative for the most current information. GE, the GE Monogram, Versana Balance, LOGIQ and CrossXBeam are trademarks of GE. Tricefy trademarks are registered trademarks of Trice Imaging, Inc. GE Healthcare, a division of GE.

April 2022  
JB19253XX